



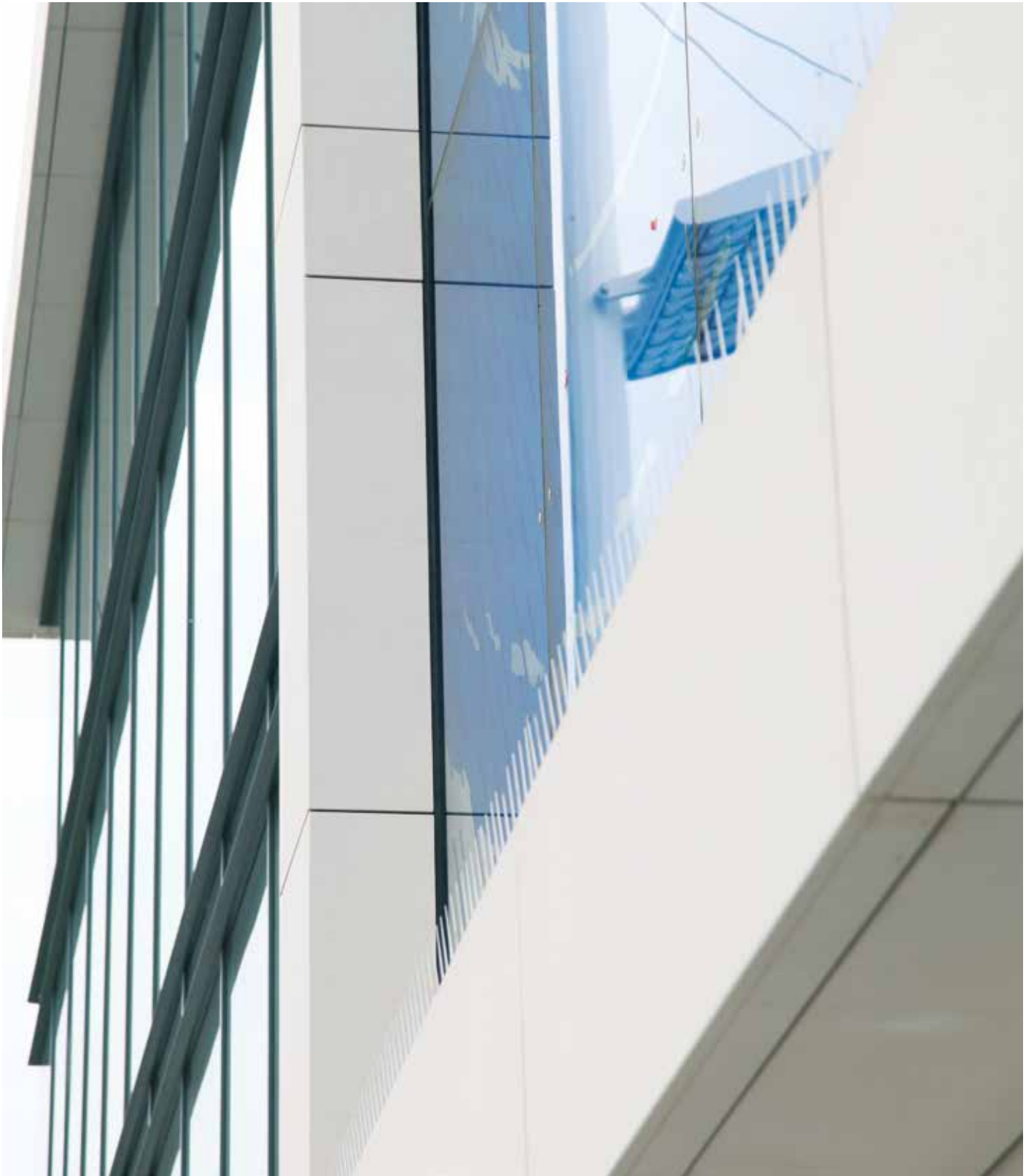
Telling Architectural Systems

Engineered Rainscreen Facades



System overview | Lithodecor

Innovative façade solutions



Building: Southampton Regional Business Centre, Southampton | **Design:** Capita Symonds

Welcome to Lithodecor



Lithodecor lightweight façades featuring natural stone and glass offer a wide range of shapes and design options that have inspired not only architects but also their clients. The systems are ideal for new build projects as well as for the refurbishment of older buildings. Lithodecor offers individual, sophisticated solutions based on first-class product quality.

Lithodecor is a member of the DAW group of companies, Germany's largest manufacturer of architectural paints. Founded in 1895, the traditional family-owned business has been extremely successful in developing product solutions that enhance the design and maintain the value of buildings.

Subsidiaries such as alsecco, Caparol and Alpina are market leaders in their respective segments. Synergies are achieved throughout, from research to production, and have delivered many classic products and innovations.

This brochure gives you a detailed overview of Lithodecor's products and systems outlining their performance and creative design opportunities.



LITHODECOR
Innovative Façade Systems



Photograph on title page: Earth Sciences Building, Oxford University | **Design:** Wilkinson Eyre Architects, London

Contents



Philosophy

Sophisticated, high-tech façade solutions featuring natural stone and glass. We offer individual solutions for architectural, technical and structural requirements.

→ Page 06



Production

Excellent product quality assured through ultra-modern manufacturing techniques at our site in Germany, ensuring flexibility of design for clients.

→ Page 08



Airtec Stone

Lightweight natural stone façades offer an extremely attractive solution for any architectural project. Ideal even for difficult substrates when refurbishing older properties.

→ Page 10



Airtec Glass

Unique glass finish which is light in weight and available in a wide range of colours. Perfect when combined with Airtec Stone on the same project.

→ Page 18



Airtec Photovoltaic

The Airtec system opens up innovative forms of solar energy generation for façades, combining technology and design.

→ Page 28



Natural stone wall-base system

Combining function and design, this system enables a bonded composite system to be used in conjunction with the ventilated, mechanically-fixed system.

→ Page 29



Airtec projects

A more detailed look at a small selection of our most innovative and technical projects for both Airtec Stone and Airtec Glass.

→ Page 30



Technical support

Lithodecor offers full technical and design support from inception to installation. We are available to offer advice and assistance in choosing the right system for your project.

→ Page 39